

# DORDRECHT | SPORTACCOMMODATIE CKV ORANJE WIT



Luchtfoto | 1 : 1500



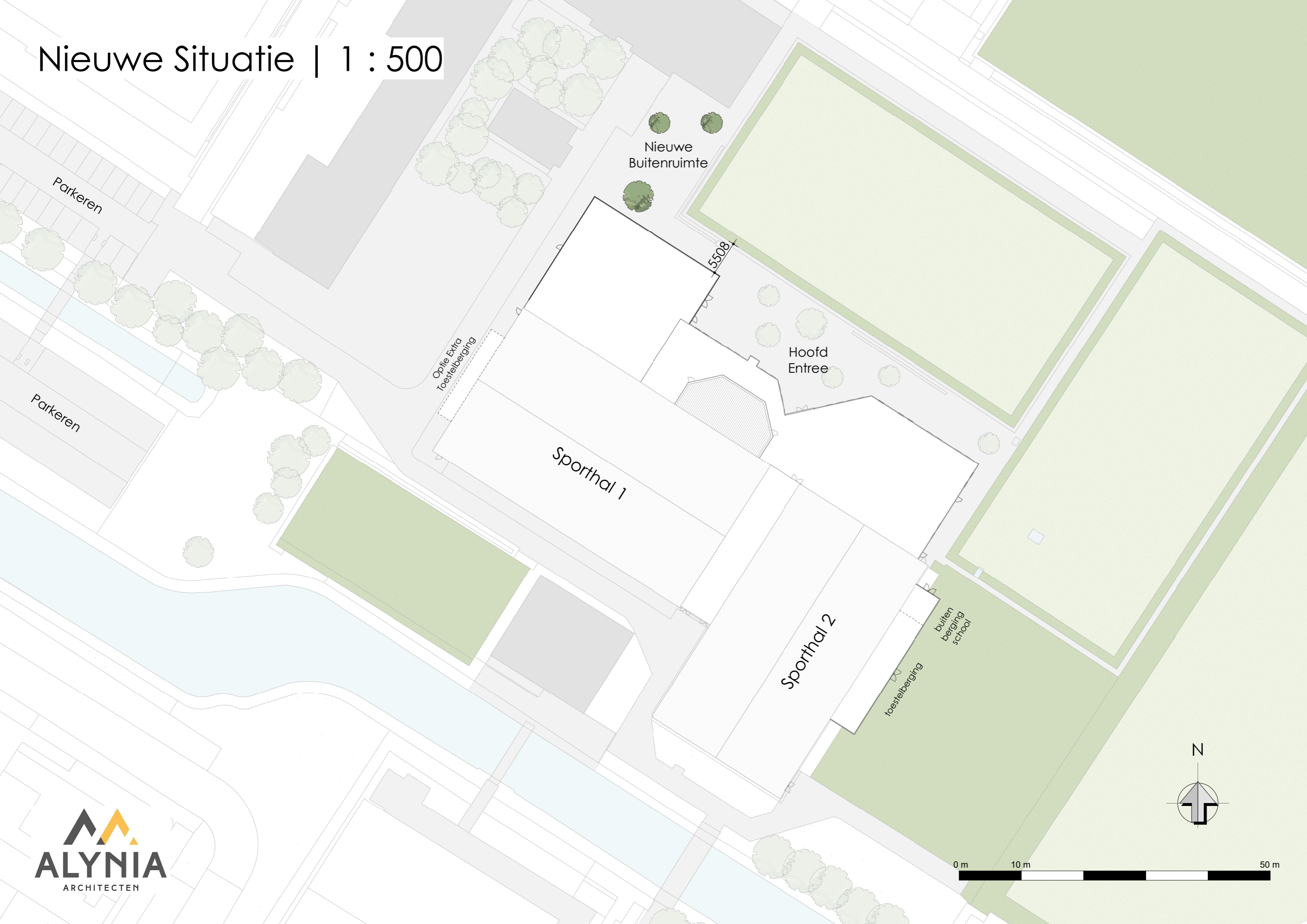


# Bestaande Situatie | 1 : 500



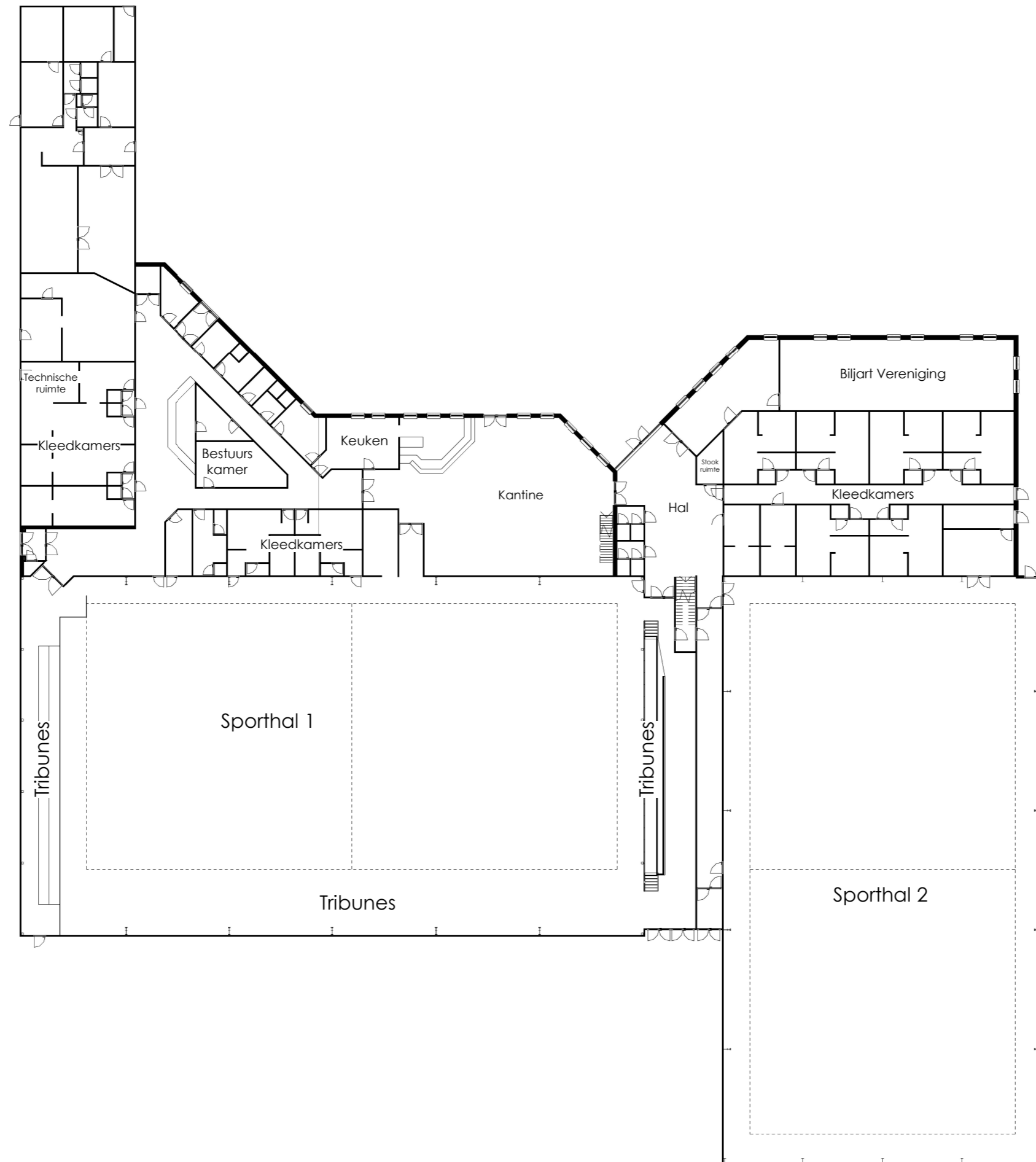


# Nieuwe Situatie | 1 : 500



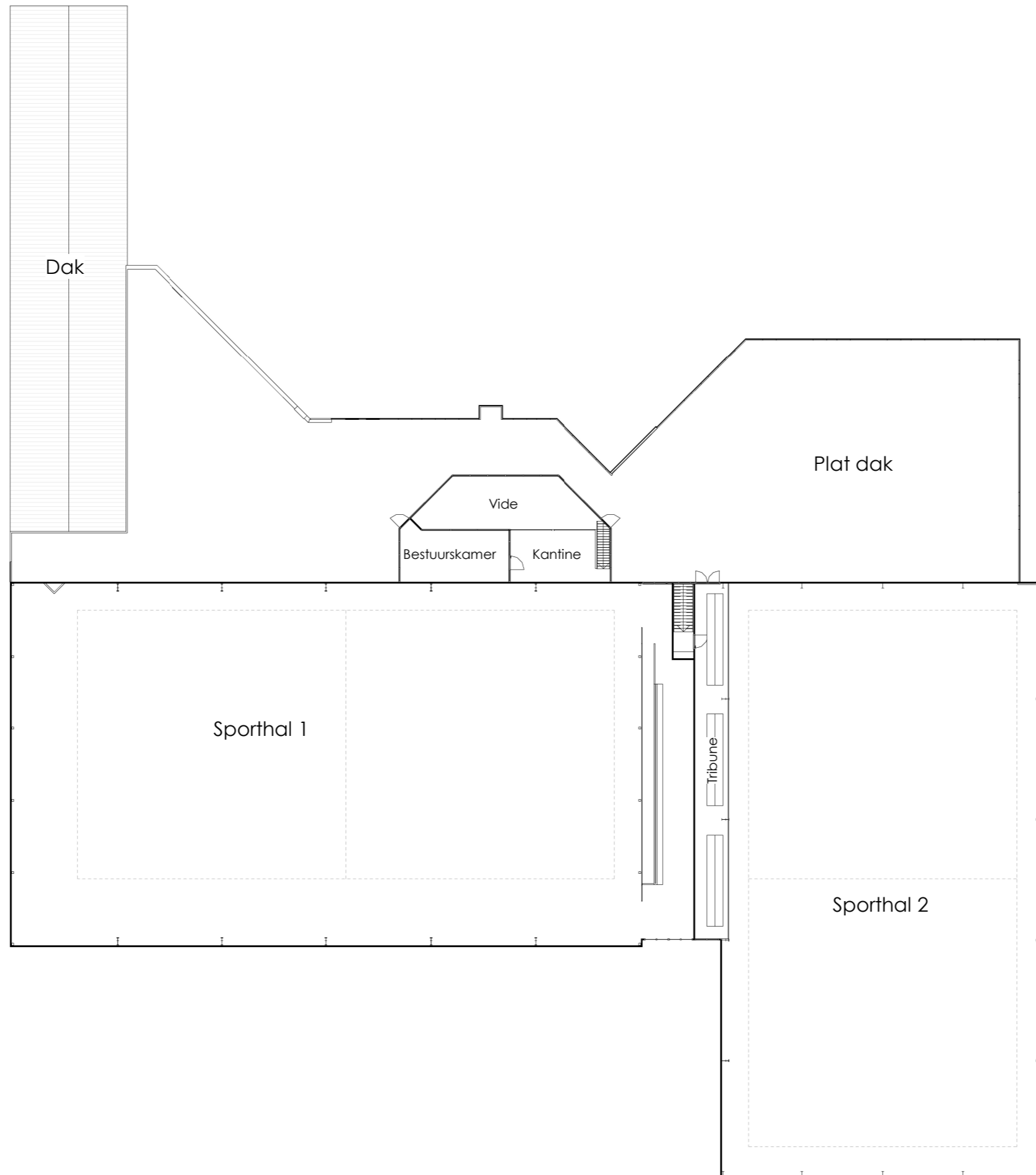


# Begane Grond Bestand | 1:350



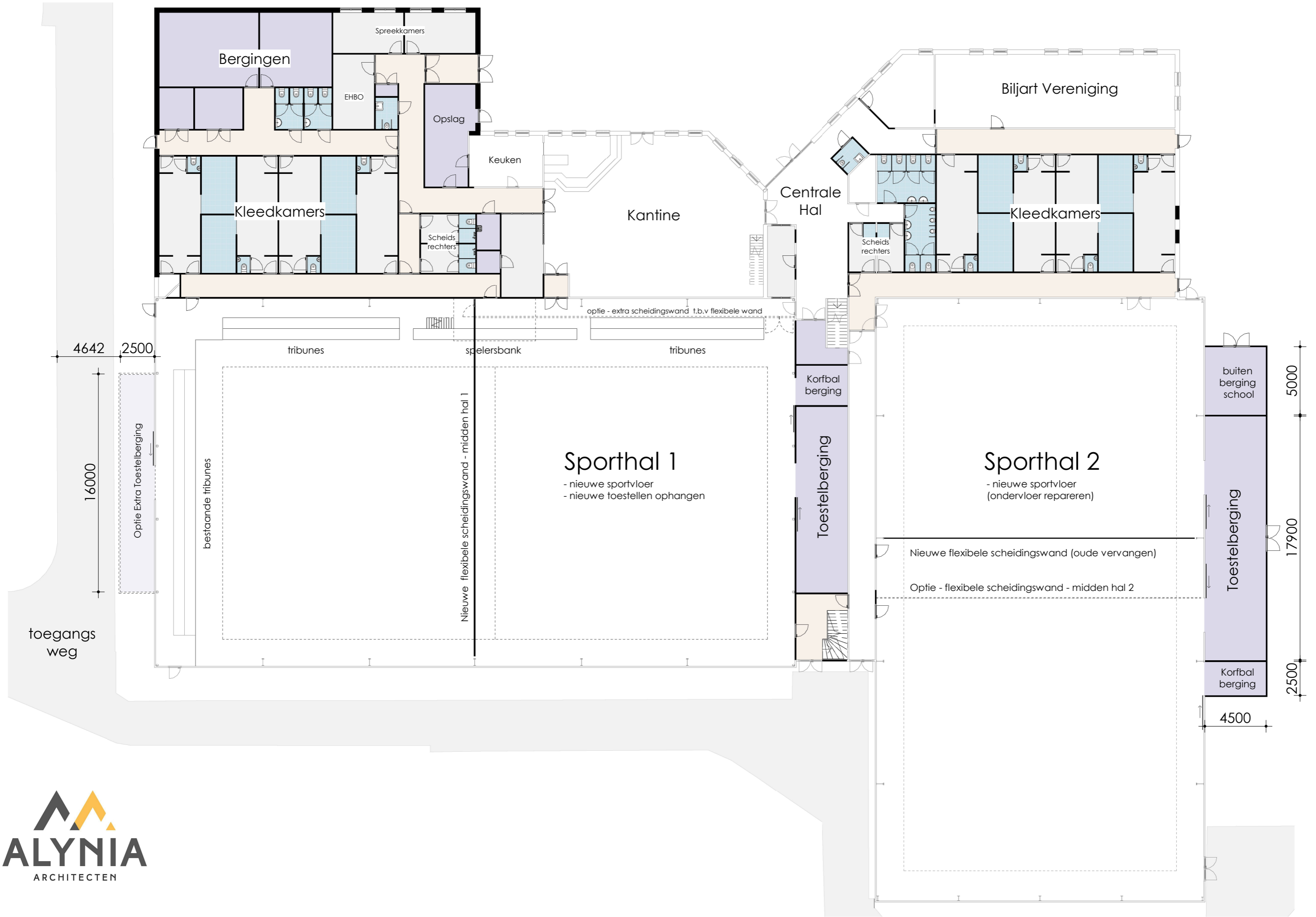


# 1e Verdieping Bestaand | 1:350



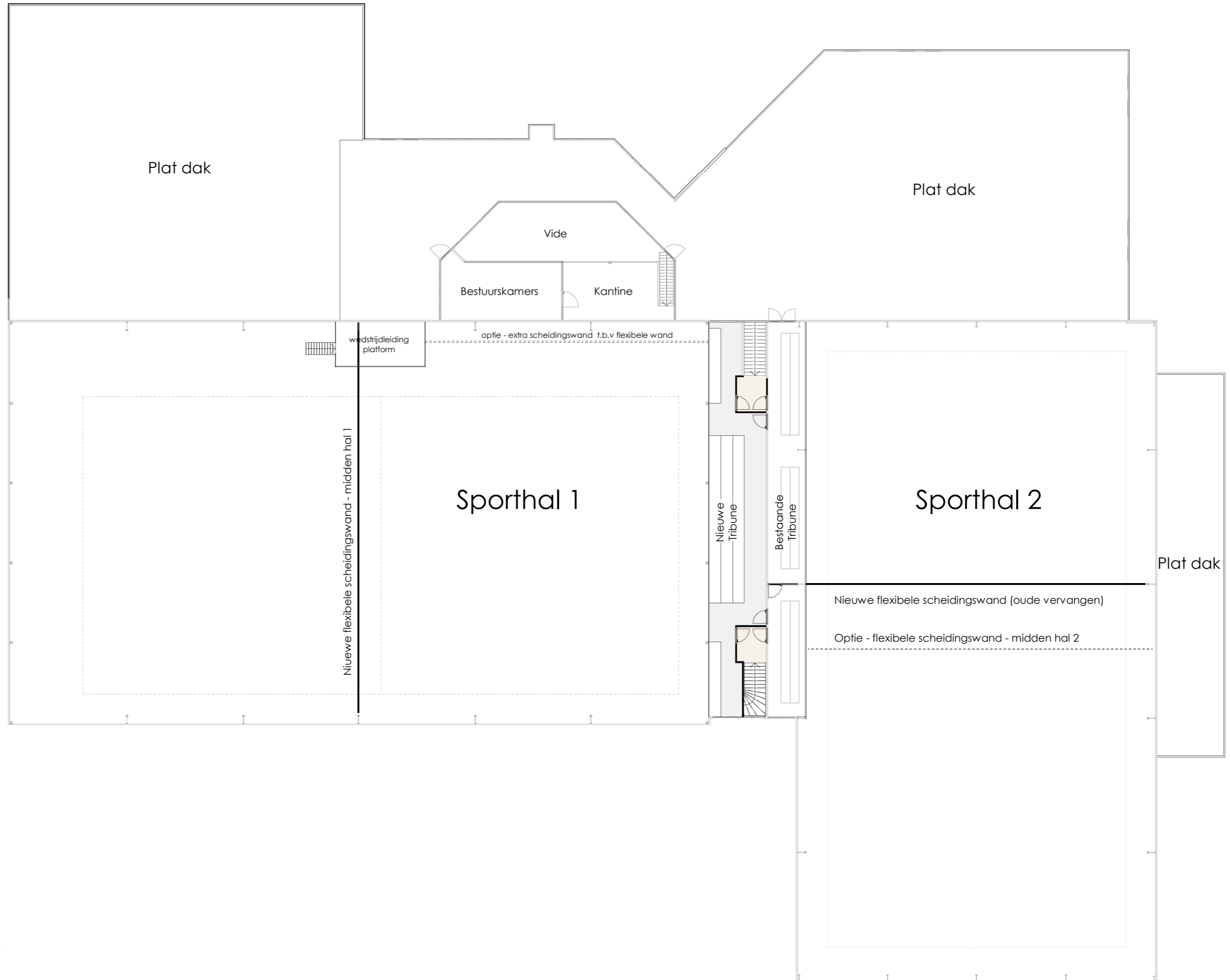


# Begane Grond | 1:250

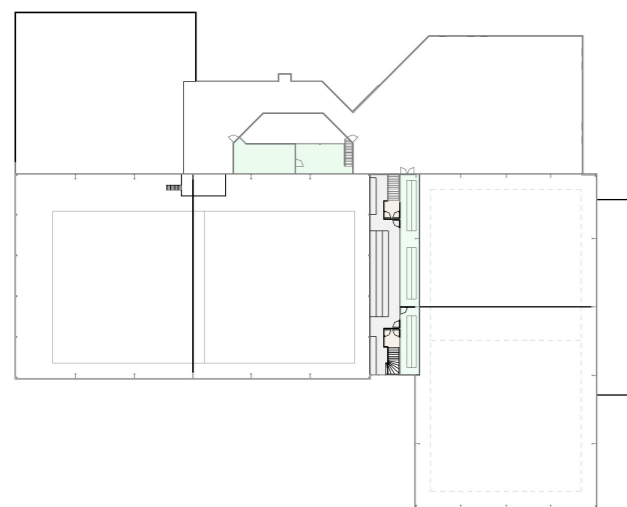




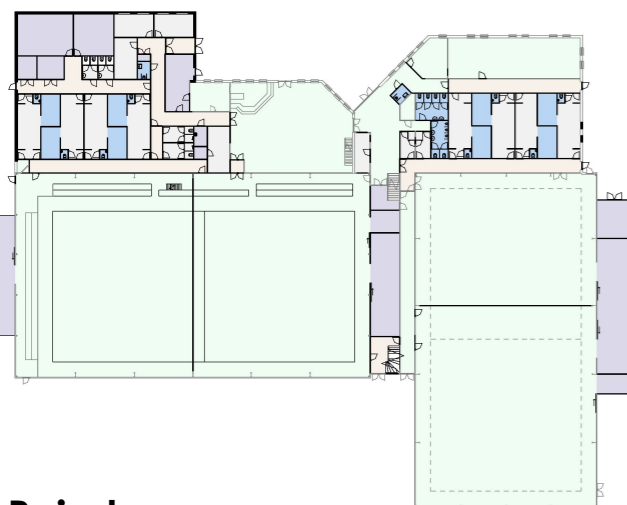
# 1e Verdieping | 1:250



# Oppervlaktes | 1 : 1000



1e Verdieping

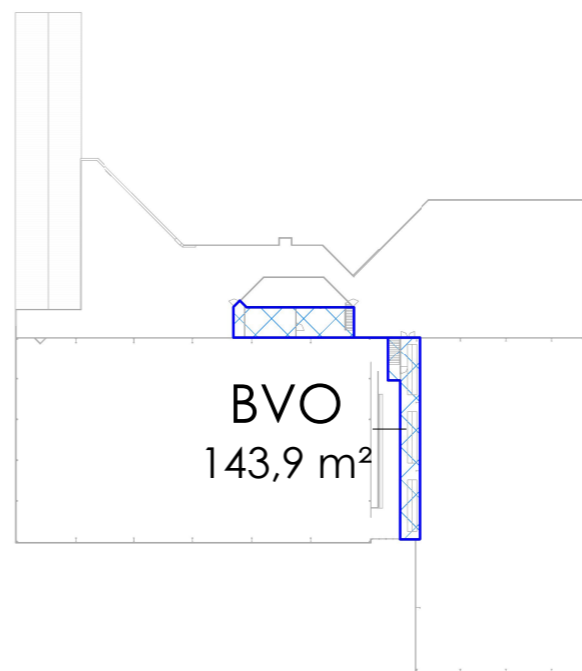


## Ruimtes

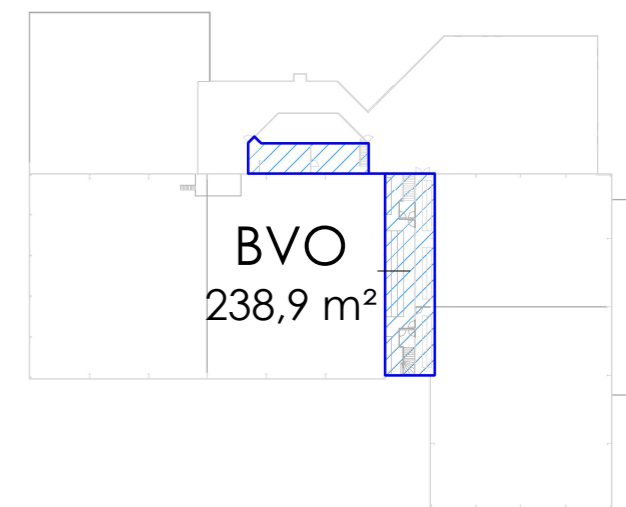
- Badruimte
- Bergruimte
- Bestaand
- Toiletruimte
- Verblijfsruimte
- Verkeersruimte

## Gebruiksoppervlakte

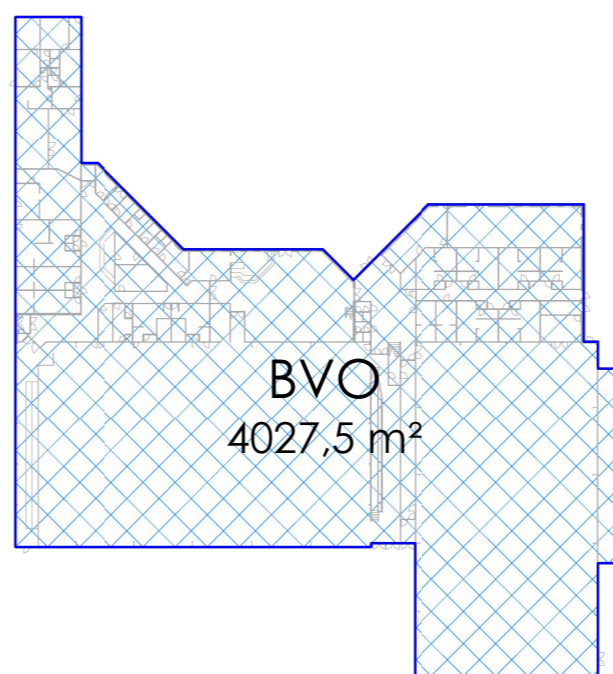
Beheerder	11 m <sup>2</sup>
Berging onderhoud	29 m <sup>2</sup>
Bergruimte commissie	40 m <sup>2</sup>
Bestuurskamer	32 m <sup>2</sup>
Biljart Vereniging	94 m <sup>2</sup>
Binnenkleedkamer 1	24 m <sup>2</sup>
Binnenkleedkamer 2	24 m <sup>2</sup>
Binnenkleedkamer 3	24 m <sup>2</sup>
Binnenkleedkamer 4	24 m <sup>2</sup>
Binnenkleedkamer 5	24 m <sup>2</sup>
Binnenkleedkamer 6	24 m <sup>2</sup>
Binnenkleedkamer 7	24 m <sup>2</sup>
Binnenkleedkamer 8	24 m <sup>2</sup>
buitenberging school	23 m <sup>2</sup>
Centrale Hal	75 m <sup>2</sup>
Dames toilet	15 m <sup>2</sup>
Docentkamer	22 m <sup>2</sup>
Douches	85 m <sup>2</sup>
EHBO	16 m <sup>2</sup>
Gang	118 m <sup>2</sup>
Heren toilet	11 m <sup>2</sup>
Kantine	206 m <sup>2</sup>
Keuken	20 m <sup>2</sup>
Kids hoek	19 m <sup>2</sup>
Korfbalberging	22 m <sup>2</sup>
Meterkast	1 m <sup>2</sup>
MIVA	7 m <sup>2</sup>
Opslag	28 m <sup>2</sup>
Optie Extra Toestelberging	40 m <sup>2</sup>
Portaal	8 m <sup>2</sup>
Scheidsrechter 1	15 m <sup>2</sup>
Scheidsrechter 2	15 m <sup>2</sup>
Schone gang	87 m <sup>2</sup>
Schoonmaak	9 m <sup>2</sup>
Sponsor/kledingcommissie	11 m <sup>2</sup>
Sporthal 1	1263 m <sup>2</sup>
Sporthal 2	1060 m <sup>2</sup>
Spreekkamer 1	16 m <sup>2</sup>
Spreekkamer 2	16 m <sup>2</sup>
Stookruimte	6 m <sup>2</sup>
Technische ruimte	8 m <sup>2</sup>
Toestelberging	132 m <sup>2</sup>
Toilet	9 m <sup>2</sup>
Toilet D.	4 m <sup>2</sup>
Toilet H.	4 m <sup>2</sup>
Tribune Sporthal 1	81 m <sup>2</sup>
Tribune Sporthal 2	68 m <sup>2</sup>
Verdeelkast	2 m <sup>2</sup>
Vuile gang	70 m <sup>2</sup>
Werkkast	4 m <sup>2</sup>
<b>Totaal</b>	<b>3993 m<sup>2</sup></b>



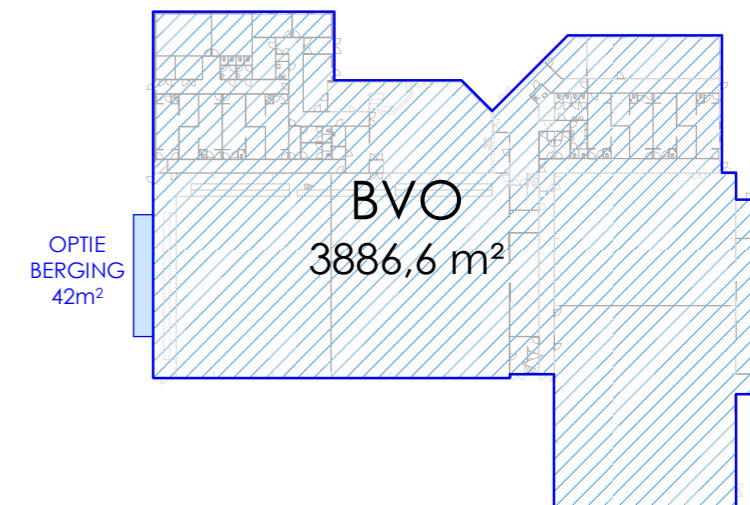
1e Verdieping



1e Verdieping



Begane Grond



Begane Grond

## Brutovloeroppervlak Bestaand

Begane grond	4027 m <sup>2</sup>
1e Verdieping	144 m <sup>2</sup>
<b>Totaal</b>	<b>4171 m<sup>2</sup></b>

## Brutovloeroppervlak Nieuw

Begane grond	3887 m <sup>2</sup>
1e Verdieping	239 m <sup>2</sup>
<b>Totaal</b>	<b>4126 m<sup>2</sup></b>
Met optie berging	4168 m <sup>2</sup>



# Sporthal 1 | 1 : 100



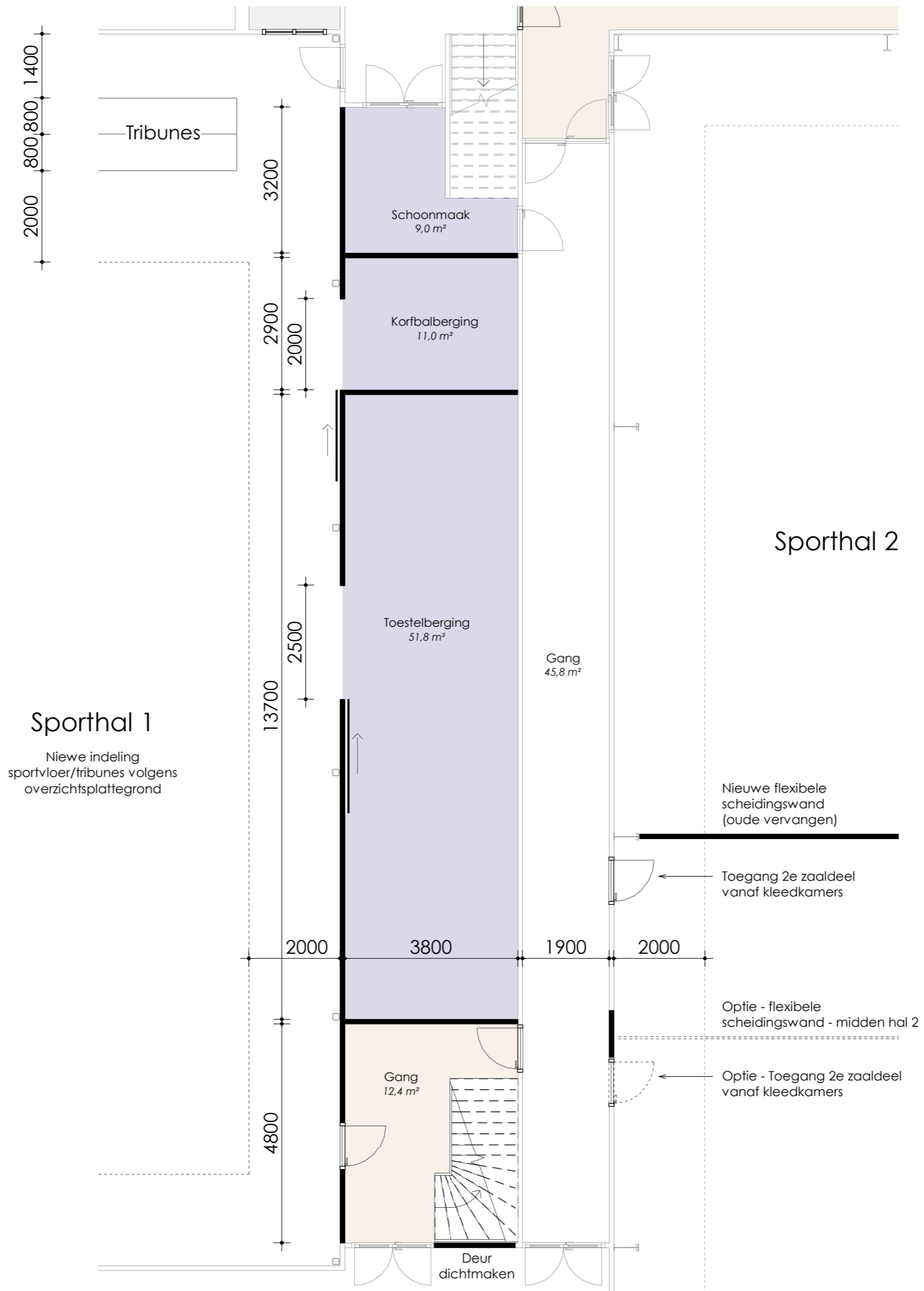
# Sporthal 2 | 1 : 100





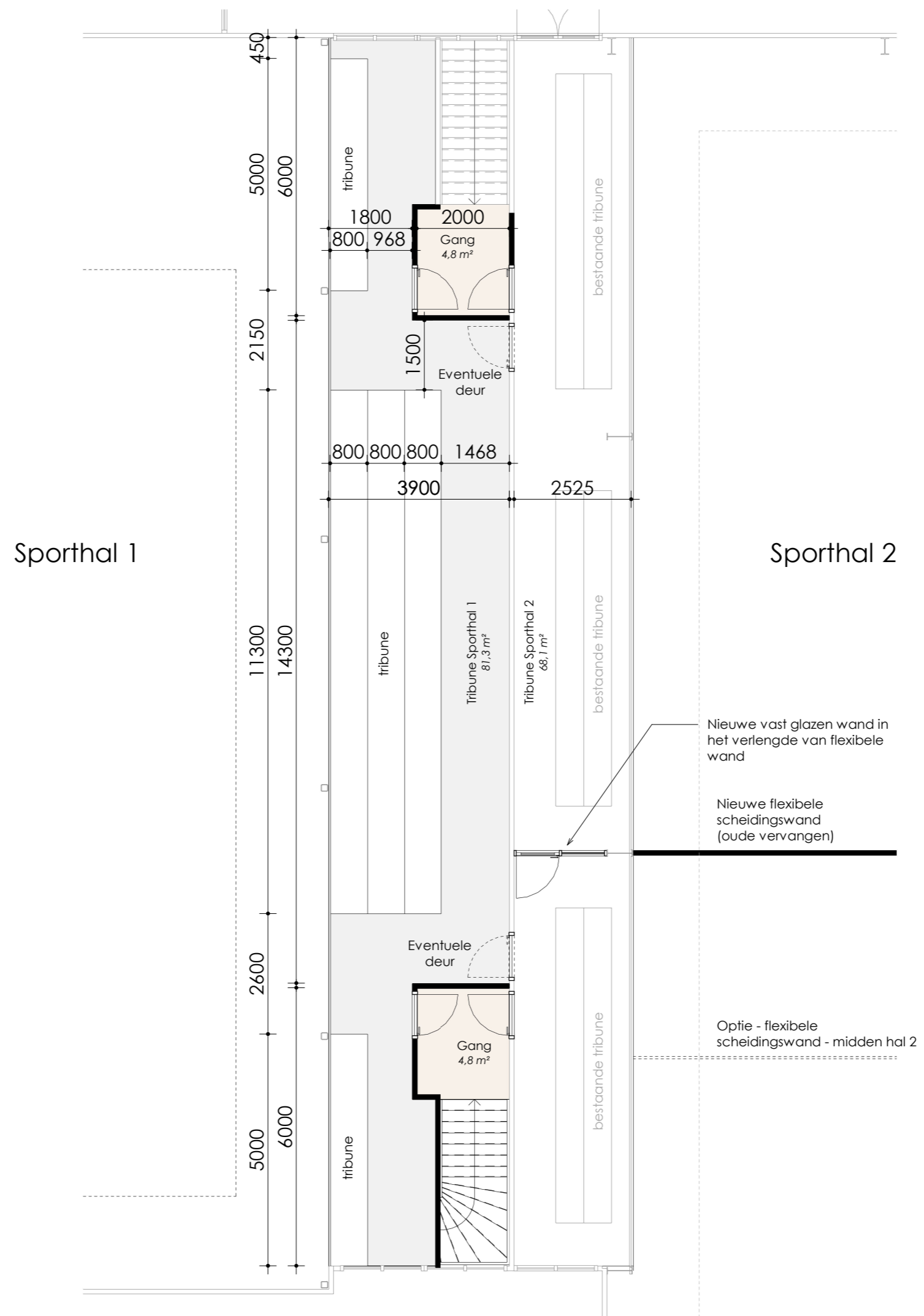
# Tribune | 1 : 100

## Begane Grond



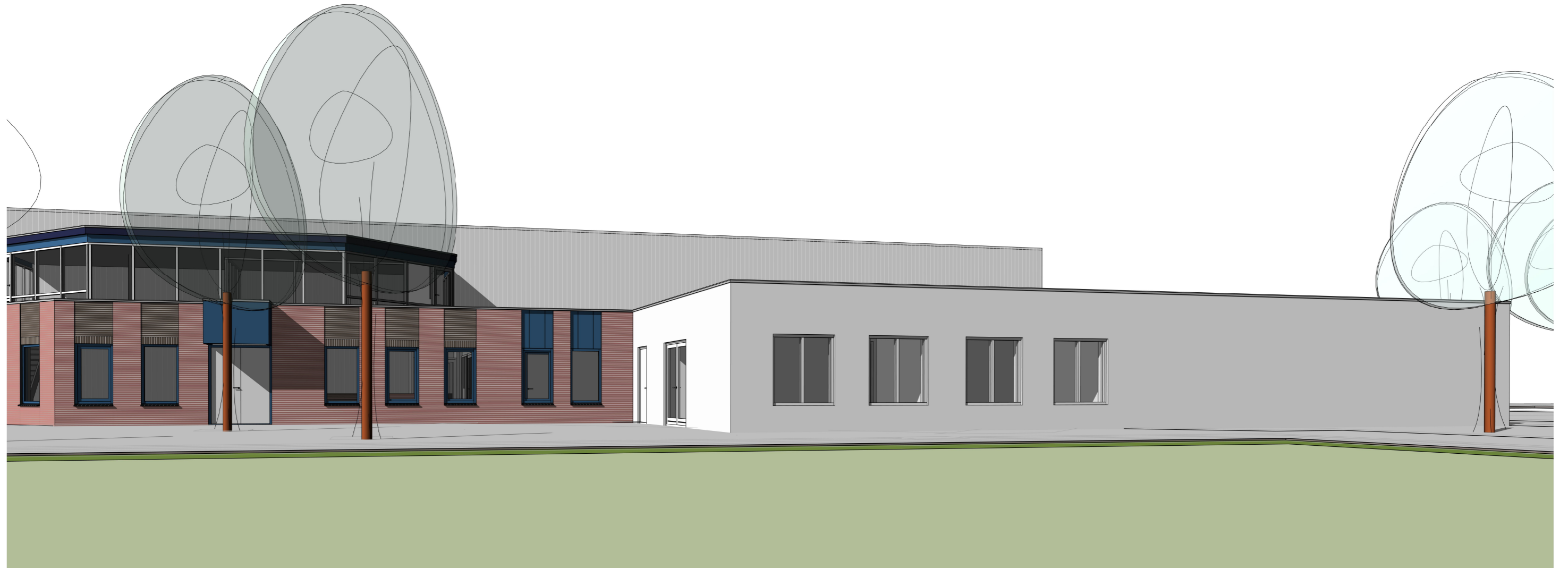
# Tribune | 1 : 100

## 1e Verdieping





# Nieuw Volume



# Vogelvlucht

